

Foundation Stage 1 Parents' Handbook

Starting Nursery



This handbook is designed to provide information to parents about the Nursery. We hope that you will find this information of use and of interest, and that it will answer any questions you may have. We also hope it will help your child to settle successfully into Nursery.

If after reading it you still have some queries, please do not hesitate to ask either the class teacher, the administrative staff in the school office or the head teacher. We are here to help!

WELCOME TO NURSERY!



Home Visits

At our parent information evening your family will be offered a home visit. The Nursery staff will visit you at home and this is an opportunity to share information about your child in order to help them settle into Nursery.

Starting Nursery

As Nursery staff make home visits starting on 6th September, Nursery will not open until Monday 17th September.

We stagger the children's start date in Nursery from this date to allow them to settle happily. Please book your child's start date at the parent's information evening.

On your child's start date we ask that you bring them for a short session arriving at your given time between 8.30am and 9.15am or 12.30pm and 1.45pm; you will then pick them up a short while later. We like them to leave wanting more – it makes a big difference to their transition. You will receive further information about your start date separately before the end of the school term.

Staff



Head Teacher,
Mrs Carole Clemens



Nursery Teacher,
Miss Sophie James



Nursery Teaching Assistant,
Miss Beth Freeman



Mrs Anna Molde



Mrs Gillian Stuart



Mrs Sarah Williams

Mrs Molde, Mrs Stuart and Mrs Williams are our office angels. They are able to help with any organisational queries during your child's time at Nursery and once they are in school.

Being a volunteer/visitor/parent helper in school

Parent helpers and volunteers at our school bring with them a wealth of skills and experience that can enhance the learning opportunities of the children. Banks Road welcomes and encourages them. Parent helpers are always welcome in the Nursery – regularly or occasionally. Activities may include playing a board game with a small group of children, reading stories and sharing books or sharing a skill or craft you particularly enjoy. In addition during the year we will take part in school trips and we always like to take as many parent helpers as possible on these trips.

If you would like to help at school or nursery **AT ANY TIME** (including on the trips) you will be required to attend an induction meeting with the head teacher, Mrs Clemens. During this meeting you will be guided through the policy and procedures for any volunteer in school. This is our duty of care to you and your child. At the end of this meeting you will be asked to sign an agreement form which outlines the expectations of all stakeholders in order to actively support our school aims and values. **You will only have to go through the induction process once during the time your child is at Banks Road.**

There are only two induction meetings scheduled: **Wednesday 26th September at 6pm and Thursday 27th September at 9am.** Please try to attend one of these sessions. We know from experience that parents find it very frustrating later in the year if they have not attended these and want to join in with our nursery activities.

Nursery Times



Morning Nursery – 8.30 – 11.30am

Lunch Club – 11.30am – 12.30pm

Afternoon Nursery – 12.30 – 3.30pm



It is important to arrive and collect on time. It helps the children to learn the necessity for good timekeeping.

If you will be unavoidably late picking up please telephone us so that we can explain this to your child.

If you have children that you need to collect at 3.30pm we are able to offer an earlier collection time at 3.15pm instead. Please let Nursery staff know if you need your child to finish at 3.15pm.

Although attendance at Nursery is non-statutory we believe every day counts. Attendance records are kept and we ask that you always let us know if your child is unable to come to Nursery for any reason.

Our Daily Routine

Children and parents are asked to wait outside Nursery until a member of staff opens the door and welcomes them in. The children's first task is to register their attendance by putting their name card on the wall to show they have arrived at Nursery. After hanging up their coat and bag they find their name and go to the carpet area to join in with a physical challenge.

Once children are settled we hold a short group time in which we meet and greet the other children attending and talk together about today's learning. Once this group time is completed children are able to choose where they wish to play in Nursery.

During the Nursery session we have a short group time where we focus on early phonics skills such as rhyming. We play games and sing songs together. At this time we also have our snack when children are able to have their free milk and fruit with their friends.



Then children are able to access both the inside and outside areas of Nursery. We go outside whatever the weather and would therefore ask that you ensure your child has sensible outdoor clothing and wellies with them at all Nursery sessions.

Everyone helps to tidy up towards the end of the Nursery session. Children are encouraged to tidy the area they have been working in.

The session then finishes with a story time together.

At the end of the session Parents and carers are asked to wait outside the Nursery until staff open the door. The children will remain in the story area until they are collected.

How we Learn in Nursery

We believe that young children learn most effectively through active investigation, enquiry, first hand experience, play and talk.

“Through play children practise and consolidate learning, play with ideas and develop what they know. In their play children dare to take risks, negotiate, solve problems, initiate, anticipate, rearrange, restate, reflect, integrate and consolidate their knowledge and understanding”. *Early Years Curriculum Group*



Children are encouraged to join in all the activities, to be independent and to make choices. We offer a rich and varied curriculum in a safe and inviting environment. We understand that children develop at their own pace, but with encouragement and opportunity will reach their full potential. Children learn best when they are happy, safe and secure. We are there to guide and teach and will get to know you and your child well during your time here.

We have a number of curriculum documents, statements and policies all available for you to see. These are available on our school banksroadschool.co.uk or, alternatively, if you would like a hard copy please ask at the school office.

Our environment is planned to enable children to extend and develop their thinking and learning across all areas of the curriculum. Although the resources in each area tend to reflect a particular curricular area, they are planned together enabling children to consolidate and apply their learning in a way that makes sense to them.

Our environment consists of several areas. Each area offers a different variety of learning experiences for our children.

- Drawing and writing area
- Listening area
- Book corner
- Puzzles and fine motor skill activities
- Building and Small world play
- Number area
- Exploring and Investigating area
- Sand and Water
- Creative area for painting, modelling and messy play
- Music area
- Role Play area and dressing up

We also have an interactive whiteboard, desktop computer and access to a wide range of school ICT equipment which we use in Nursery regularly.

Outdoor Play

We pride ourselves on the opportunities we offer your child to learn outdoors. We commit one session a week to Forest school in our Forest school garden where children learn an appreciation of nature and care for the environment, bush-craft skills and collaborative play and games outdoors.



In addition we provide daily opportunities to learn outdoors through the shared use of a large outdoor space within which children can access bikes, a climbing frame, den building, physical play with a wide range of equipment, sand and water play and many other exciting activities and adventures.

Please see the appendix 1 for more information about Forest School.

Toys from Home

Whilst it is not Nursery policy to ban children from bringing toys from home we ask that you discourage this as much as possible. We find that children become very upset if their toy goes missing or is damaged at Nursery.

If children do bring a toy we ask them to put it in their school bag to be kept safe until the end of the session.



Nursery Libraries



We have library club in Nursery. On Monday and Thursday each week the children are able to borrow a book to read at home. These need to be returned to Nursery by the following week.

Milk & Snacks

Milk is available in school daily. If you would like your child to receive milk, please either register your child's details on the following website www.coolmilk.com or request a form from the school office.

The school is a participant in the National Fruit Scheme. This ensures that every child receives a free piece of fruit each day. No other snacks should be brought in.

Breakfast Club



Our breakfast club is open to children who attend Banks Road Infant & Nursery School and their siblings who attend Bispham Drive Junior School. Breakfast club is open each day during term time (except Inset days). There is no need to book a place at Breakfast club.

Children can arrive between 7.30am and 8.15am. The breakfast provided will consist of cereals, fruit juice, toast with a variety of spreads, fresh fruit, yoghurts and hot drinks. Unfortunately we cannot accommodate children who arrive after 8.15am.

We provide childcare and breakfast at a cost of £4.50 per day. Cash payments are preferred, and will be collected at Breakfast Club, either on the first day of attendance each week or on a daily basis.

If however you are entitled to the 30 hours of funding and you chose to use your hours to pay for breakfast club, the daily charge is just £1. You will be invoiced termly in advance for this cost.

Lunch Club

We have a limited number of places for children to attend our lunch club. Children are able to eat a healthy packed lunch (provided from home) in a social and secure environment fully supervised by their own dedicated midday supervisor. Please ensure your child has lots of health choices, keeping chocolate and crisps to a minimum.



If you are entitled to the 30 hours of funding and you chose to use your hours to pay for lunch club, there is no charge.

If you are not using the 30 hours funding to pay for lunch club the cost is £3.50 per session, and bookings for this need to be made a term in advance for the full term. Please ask at the school office or ring on 0115 9179881 if you would be interested in your child attending lunch club.

Wraparound Care

We are able to offer an after school club for children in school and nursery. This runs in the school hall from 3.15pm to 6pm. Children get a light healthy tea for example sandwiches, beans on toast, soup, fruits, yoghurt etc. They have time to relax and play with their friends. There are craft activities and outdoor play as well as a range of toys for the children to enjoy.

If you are entitled to the 30 hours of funding and you chose to use your hours to pay for after school club, there is a charge of £2. If you are not entitled to the 30 hours funding the cost is £10 per session, and bookings for this need to be made a term in advance for the full term. Please contact the school office if you think this is a service you may require.

There may also be a limited number of additional nursery sessions that can be purchased, at a cost of £10.50 per session and booked for a full term in advance. If you think that this may be interest to you please contact the school office to find out our availability.

Communication with Parents

We try to inform parents of events, routines and the curriculum in a variety of ways. The most reliable way to receive information is via email. Please let the office know your email address if you would like to take up this option.

All sorts of Information can also be found on our school website, so please look at this regularly, too at www.banksroadschool.co.uk

Letters and information may be sent home as paper copies and will be put on your child's peg, so please check it regularly. Newsletters are written regularly, giving predominantly whole school information, including dates for diaries. Notices will also be added to the classroom window providing general information about the class and routines and will also give advance warning of events in which the children will be participating.

Special Educational Needs

We treat all our pupils as individuals, and plan their learning experiences according to their needs. Careful records are kept of each child's progress, which are available to parents who wish to see them. In this way we identify special needs at an early stage in the child's school career.

Initially the class teacher provides a variety of approaches and experiences to help the child overcome areas of difficulty, and will always inform parents of any special arrangements being made. If this support does not overcome the difficulty, then the special needs co-ordinator will be consulted. She will suggest other strategies and may support the child herself. She will also consult with the child's parents.

If necessary, additional support will be sought from external special needs support services, but only after consultation with parents.

Please see appendix 2 for further information about Special Educational Needs.

Early Years Pupil Premium

If you have a low income or are in receipt of certain benefits the school may be able to apply for additional funding to enable us to provide additional financial and educational support to **your** child. This is vital funding to our school to enable us to enhance the experience for your child. Please see the letter at appendix 3 for further details.

Transfer to School

When it comes to the time for your child to start school we are able to offer the happiest and most successful transition available. Throughout the year children participate in school events regularly and staff from school work with children in Nursery. In addition we share the outside area with children who have just started school and use the hall regularly for activities such as P.E., music, games and singing. This ensures that by the time your child starts school they are familiar with the school routines and environment and staff in school know your child well. In addition where children have found it difficult to settle in nursery or have additional needs transition arrangements are extended to provide individual opportunities as appropriate.

Security

The safety of all our pupils is of paramount importance. We ask parents ensure they close the playground gate when entering and leaving the premises. Please also let us know if someone different is collecting your child. **We will not allow children to leave with strangers or unaccompanied.** If you are going to be late, we will keep your child until you arrive. If possible let us know you have been delayed and we will then reassure your child.

We ask all adults coming to school during the school day to come via the main entrance and register their presence.

Behaviour

At Banks Road School we aim to achieve a calm and orderly school environment based on mutual respect and trust with high standards of behaviour. Our school website has lots of information about behaviour expectations including our behaviour policy, please visit: www.banksroadschool.co.uk. Appendix 4 also provides some further information for parents about our anti-bullying strategies.

Travel to School

Children are welcome to come to school on their scooters. Scooters can be stored in the scooter park by the main gate at parents' own risk. A padlock is required to secure the scooter throughout the day. This facility is **not** suitable for bicycles; if you allow your child to ride their bicycle to school, you must push it home when they have gone into class.

Park & Stride

Many parents use cars to bring and fetch children from school. Whilst we prefer children to walk to school, we understand that this is not always possible.

In order to minimise risk to our children and inconvenience to neighbouring residents, we have a 'Park & Stride' ethos with support from members of the local community, Local Authority and Nottinghamshire Police.

We hope all parents will support this plan by parking at the Greenwood Community Centre, which is accessed via Chester Green, and is free, and then striding from there to school (and reversing the process at home time.)

Thank you for your cooperation in keeping all members of our school safe.

Absence



If your child is absent please telephone school as soon as possible on the first day of absence. An answer-phone operates when the office is unattended so that parents can leave messages prior to leaving for work etc.

It is our policy to follow up any unexplained absence by telephoning parents who have not contacted us by 30 minutes after the start of their child's Nursery session.

Medicines

Many children are fit to return to school before they have completed their courses of medication. When a child is taking *prescribed* medicines, we will administer them during the school day if necessary. We ask that the medicine is named and brought to the school office daily along with a suitable spoon/syringe. The parent/carer will be asked to complete a medication authorisation form. We can keep the medicine in the refrigerator if necessary. **We will not administer non-prescription medicines.**

Illness during the day

If your child is taken ill or has an accident at Nursery, every effort will be made to contact you. Please help us by ensuring that we have at least two contact numbers which are kept up to date.

Infectious illnesses

In the cases of infectious illnesses the following apply

Illness	Appropriate action
Sickness or diarrhoea bug	Wait 48 hours after the last bout of illness before your child returns to nursery. They must be well and eating and drinking normally.
Conjunctivitis	Do not bring your child to nursery if their eyes are 'gunky'. Wait until 24 hours after treatment has been started.
Chicken pox	Do not bring your child to nursery until the last spot has scabbed.
Hand, foot & mouth	Do not bring your child to nursery until the last blister has dried up.
Scarlett Fever	Your child can return 24 hours after starting antibiotic treatment.
Impetigo	Do not bring your child to nursery until the lesions have scabbed.

Asthma

We ask parents to complete an annual 'Asthma plan' if their child suffers with asthma so that we can be aware of the likelihood and any possible triggers of an attack. Your child's asthma inhaler will be kept in Nursery and administered by the Nursery teacher as outlined in your child's Asthma plan.

Head Lice

Head lice, or nits, are sadly a fact of school life. Please check your child's hair regularly and let us know if you find either louse or nits (the egg of the louse). We can then remind other parent to check their children's hair and so prevent them reaching epidemic proportions!

Sun Safety

Banks Road is a Sun Safe school. We actively promote the use of sun screen, hats and sunglasses during the summer months. We ask that you apply a once daily, high factor, sun screen to your child before they come to Nursery in the morning, and that you provide a tube of cream for them to reapply if you feel it necessary during the day. The staff are unable to apply cream to the children.



The Friends of Banks Road Infant School is the school's Parent Teacher Association and a registered charity. The Friends Committee is made up of parents and teachers who share an interest in raising funds for the benefit of the school, through organising fun and exciting events for the children and the parents.

The aim of the Friends Committee is to raise money for the school to spend on extra facilities and equipment to help your child have a fun and exciting time at school, they also organise social events for the children and parents. When your child starts at Banks Road you automatically become a 'Friend'.

Every year they hold a Christmas and Spring disco for the children, plus a number of events for parents such as quiz nights and a Ladies Pamper night. The main annual event is the Summer BBQ, which is held in the Summer term.

The Friends raise over £5,000 each year which pays for a Christmas tree for the school hall, a Christmas present and an Easter egg for every child. Over the past couple of years they have also funded the establishment of the Forest School area, a large interactive scree for the school hall, iPads, playground equipment, toys and games.

The meetings are quite informal, but the job gets done, and the Committee has fun doing so! There are also a couple of committee members' social evenings each year too. We hope you will become an active Friend whilst your child is at Banks Road. New committee members are always welcome, and the **AGM meeting will be held on 26th September at 6.30pm.** For more information please visit the school website. Please tell the Nursery teacher if you would be able to help the Friends.

Additional Information

We hope this booklet has provided some useful information. If there is anything else you would like to know please don't hesitate to come and ask. You can also visit our website at **www.banksroadschool.co.uk** to read news, events, policies and procedures. We look forward to meeting you and your child in Nursery soon





Forest School – Information for Parents

What is Forest School?

Forest school is an exciting opportunity for your child to experience nature and learn outdoors. At forest school the children learn through first-hand experience and develop skills like perseverance, independence and responsibility. These are all skills which will help them to achieve more when they are back in the classroom.

Where and when does Forest school take place?

Most sessions will take place in our small forest school area at the back and side of Nursery. The children will be able to access toilets in the Nursery. Some weeks we may go off site and walk to the public woodland space near Greenwood Community Centre. If we are going out of school we will endeavour to let parents know 24 hours in advance.

Forest school sessions last 2 hours and take place weekly within the normal nursery session times.

How will we keep the children safe?

The site has been carefully assessed and the children will be given detailed training for all the activities.

Part of forest school is teaching children about risks and how to evaluate them. So the children will be taught about how to add fuel to a fire, cook and make drinks using a fire, climb trees and use tools. These activities will be introduced as the children in the group are ready for them and will be carefully supervised by an adult. By allowing children to take these measured risks, we help to prepare them for making choices when they are older and teach them to be actively responsible for themselves, their choices and actions.



What if it is raining?

We try to go outside whatever the weather but obviously would not lead outdoor sessions in unsafe weather such as storms. Part of our forest school ethos is to respond to the needs of the children so sometimes our sessions are shorter if children are becoming too cold, hot or uncomfortable. We also occasionally offer the option of indoor play alongside the session when the weather is particularly cold or hot. In our experience it is rarely the children who get cold and tired or want to come inside!



What do we need for forest school?

We provide all specialist equipment such as protective clothing and tools and we also have puddle suits for all children which keep them dry. Please note these are not lined so children need to wear lots of layers underneath in the cold weather.



We ask all children to bring a pair of Wellington boots which they keep in nursery at all times. We wear these and the puddle suits in most weathers.

Children need to wear sensible clothing on forest school day such as long trousers and a long sleeved top, lots of layers and hat, scarf and gloves in Winter and sunhat and sun-cream in Summer. We send out a full list of clothing suggestions when we first start our forest school sessions after October half term.

What do the children do at forest school?

A wide variety of activities! We start with the children's interests and fascinations and explore these initially through free play and games.

During the course of the year we build up a structure which responds to the needs of the children.

This could incorporate:

- Singing
- Collaborative play and games e.g. 123 where are you, what's the time Mr Wolf
- Story telling
- Imaginative play
- Shelter building
- Ropes and knots
- Making potions and cooking in our mud kitchen
- Using simple tools to whittle wood
- 'Risky' play such as balancing over our 'mud pit' and climbing trees
- Adding fuel to fires and making hot drinks using 'Kelly kettles'
- Environmental activities such as building nests, feeding birds, building shelters for woodland animals, mini-beast hunts
- Gardening



Can I come too?



Yes please! In order for forest school to run successfully we desperately need parent helpers preferably on a regular basis. Please ask any of the nursery staff if you would like to come and help.

Special Educational Needs at Banks Road

Information for parents & carers

What are Special Educational Needs?

A child is defined under the Children & Families Act 2014 as having a Special Educational Need if they:

- have a significantly greater difficulty in learning than the majority of others their age; or
- have a disability which hinders them from making use of general educational facilities.

At Banks Road we recognise that special needs are vast and wide-ranging. A child could have a very short-term need or challenge with some area of school life or learning. On the other end of the spectrum a child may have a life-long need having great impact on their school and personal life.

Special needs can mean that a child is facing any kind of difficulty at that time. At Banks Road we aim to support the whole child including their academic, emotional, physical, behavioural and social wellbeing.

How will I know if my child is having difficulties?

- As Parents – you may already have passed on your concerns to others who can help i.e. Health Visitor, G.P.
- At Pre-School – Playgroup, Nursery or child-minders, others may have informed you that they had noticed some things were particularly challenging for your child.
- At School – teachers and their assistants may find during their daily working contact that your child may need extra help in certain areas.
- Routine Screening – such as vision and hearing tests can provide important information, as can teacher assessments on the progress your child is making. Hearing and vision tests are no longer provided as a matter of course for all children. If you have any concerns please contact your GP. We recommend that you arrange a hearing test at some point during your child's Nursery year, just to be on the safe side.

What can you do if you are worried that your child may be having difficulties?

Your child's early years are a very important time for their physical, emotional, intellectual and social development. When your health visitor or doctor makes a routine check, they might suggest that there could be a problem. But if you have any worries of your own, you should get advice straightaway.

If you think your child may have a special educational need that has not been identified by the school you should talk to your child's class teacher, to the SENCO (this is the person in the school who has a particular responsibility for co-ordinating help for children with special educational needs), Miss Morris or to the head teacher, Mrs Clemens, straight away.

Children making slower progress or having particular difficulties in one area may be given extra help or different lessons to help them succeed.

So you should not assume, just because your child is making slower progress than you expected or the teachers are providing different support, help or activities in class, that your child has special educational needs.

- It is best to start with your child's teacher or the SENCO.
- You will be able to talk over your concerns and find out what the school thinks.
- The SENCO will be able to explain what happens next.
- Working together with your child's teachers will often help to sort out worries and problems.
- The closer you work with your child's teachers, the more successful any help for your child can be.

Remember – you know your child better than anyone.

In School support

SENCO: Miss Morris (Special Educational Needs Coordinator)

Teaching Assistants

Class teacher

All these staff have a part to play in developing and implementing the Special Needs Programme at Banks Road Infant and Nursery School.

If you are concerned about your child's progress and their learning needs, please speak to their class teacher in the first instance.

You are welcome to speak to the SENCO who can be contacted easily through the school office.

Mrs Williams is the Governor with responsibility for SEND and can be contacted through the school office.

Tel No. 0115 9179881.

Want to find out more?

For the SEND policy, accessibility plan, local statement and lots more information please refer to the SEN section of the School website: www.banksroadschool.co.uk

For further information on children with special educational needs check out the DfES publication Special Educational Needs – a guide for parents and carers. This, and lots of other information, can be found at the following website:

<http://www.education.gov.uk/schools>

You can also get help from the Nottinghamshire and Nottingham Parent Partnership Service: www.ppsnotts.org.uk

Early Years Pupil Premium

The school can claim extra funding through the Early Years Pupil Premium to support children's development, learning and care.

National data and research tells that children who are from families which have a low income or are claiming certain benefits achieve less than the expected level of development at the end of the early years foundation stage compared to other children. The Early Years Pupil Premium provides additional funding to help the school to close this gap.

The Early Years Pupil Premium provides extra funding to be used specifically for the children who are eligible. We can use the funding in any way we chose to improve the quality of the early year's education that we provide for your child. This could include for example TA intervention for small group work to support your child with a particular area of learning, or for social and emotional support; alternatively it could be used to support the cost of school trips for your child. It is important to stress however that it is for the benefit of **your child**.

It is well documented that high quality early education can influence how well a child does at both primary and secondary school, so we do want to make the most of this additional funding.

Children may qualify for pupil premium if the parent/carer receives one of the following benefits:

- Universal Credit with an annual net income of no more than £7,400
- Income support
- Income based Jobseeker's Allowance
- Support under Part 6 of the Immigration & Asylum Act 1999
- The Guarantee element of State Pension Credit
- Working Tax Credit
- Child Tax Credit

Register on-line by visiting [the public website](#) The information needed to register includes:

- Personal details (including national insurance number and date of birth)
- Child's details in full including their date of birth and school they attend.

If you have any questions, please do not hesitate to contact the school office on 0115 917 9881.

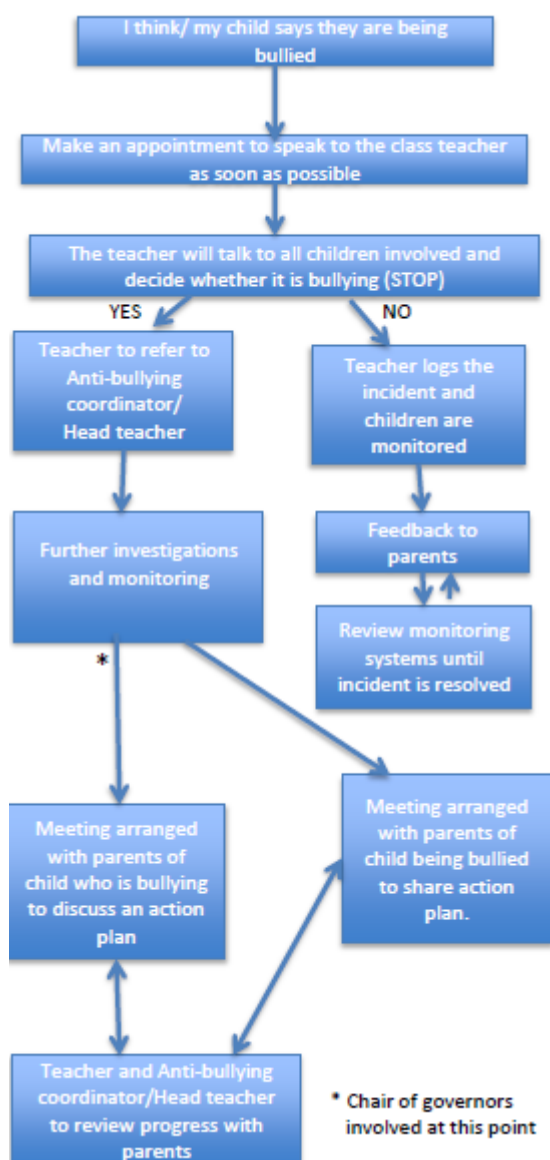
Anti-Bullying



The Definition of Bullying

Bullying occurs where there is a deliberate intention to hurt or humiliate someone. There is a power imbalance and it is usually persistent. **Several Times On Purpose (STOP)**

What happens if I suspect bullying?



Head Teacher: Carole Clemens
Tel: 0115 917 9881
Email: office@totonbanksroad.notts.sch.uk

Banks Road, Toton, Beeston, Nottingham, NG9 6HE. **Web:** www.banksroadschool.co.uk

