

Fee! Fi! Fo! Fum!

Addition and Subtraction



Fee! Fi! Fo! Fum! Addition and Subtraction



- 1 Little Red Riding Hood has 6 cheese sandwiches and 4 ham sandwiches in her basket.

How many sandwiches are in her basket altogether?



Fee! Fi! Fo! Fum! Addition and Subtraction



- 2 Jack's mum throws 4 blue beans and 5 pink beans out of the window.

How many beans does she throw out of the window altogether?

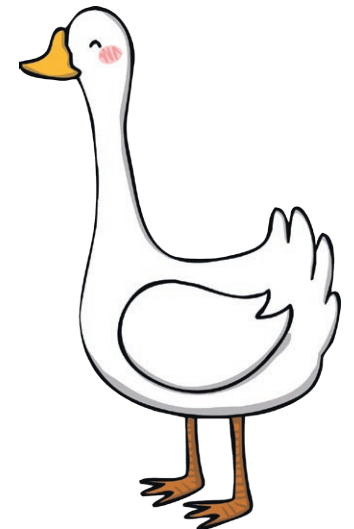
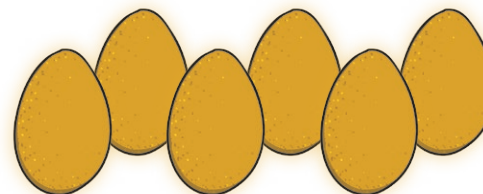


Fee! Fi! Fo! Fum! Addition and Subtraction



- 3 The goose lays 6 golden eggs. Jack takes 4 of them.

How many eggs are left?





- 4 There are 10 trees.
The woodsman cuts down 5 of them.

How many trees are left?



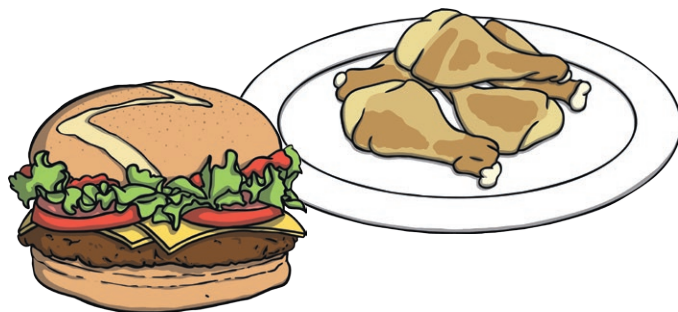
- 5 Wolfie takes 14 minutes to run from Granny's house to Jack's house.
It takes Will 6 minutes longer.

How long does it take Will to run from Granny's house to Jack's house?



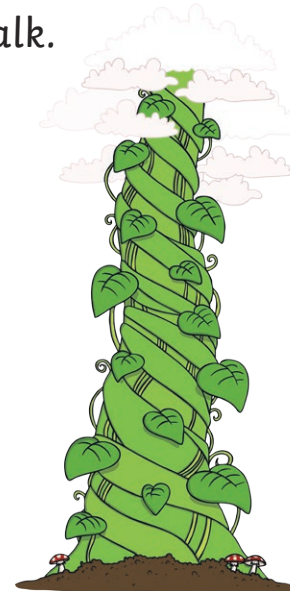
- 6 The giant eats 4 pieces of chicken, 6 burgers and 5 pieces of beef for breakfast.

How many pieces of food does the giant eat for breakfast?

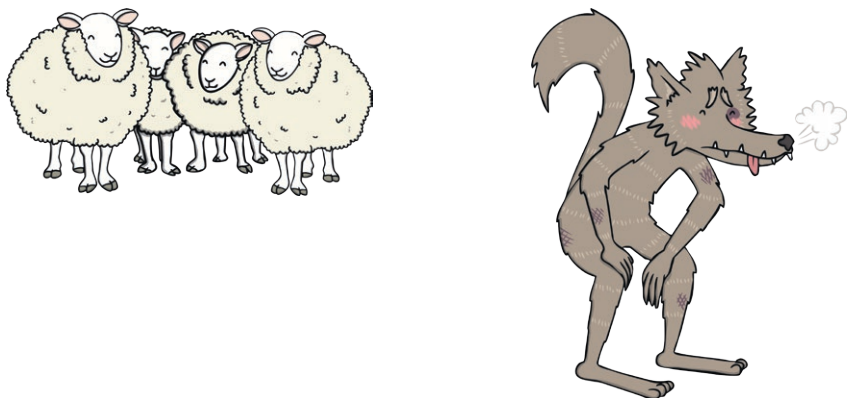


- 7 There are 23 leaves on the beanstalk.
10 leaves blow off the beanstalk.

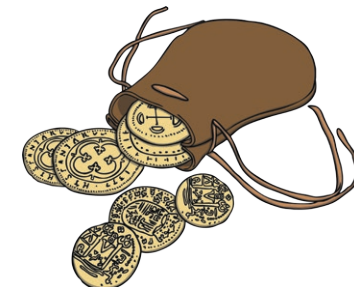
How many leaves are left on the beanstalk?



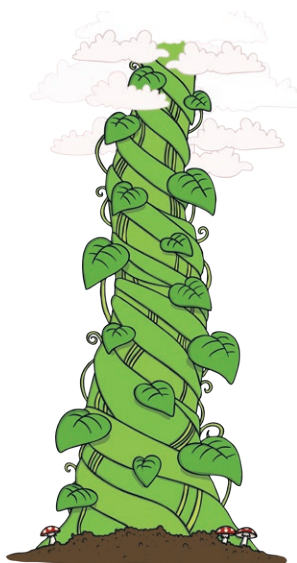
- 8** There are 18 sheep in the field.
Wolfie chases away 9 sheep.
How many sheep are left in the field?



- 9** The giant has 32 gold coins.
He puts the coins in 3 piles.
He puts 10 coins in one pile and 2 in another pile.
How many coins were in the last pile?



- 10** It takes Jack 25 minutes to climb up the beanstalk. It takes Wolfie 13 minutes more to climb up the beanstalk.
How long does it take Wolfie to climb up the beanstalk?



- 11** The harp plays music for 15 minutes and takes a break. It then plays for a further 35 minutes.
Which of these calculations shows this?

$$50 = 35 + 15$$

$$15 + 50 = 35$$





- 12** Wolfie spends half an hour altogether hiding in the nettle bush and the thorn bush.
He spends 19 minutes in the nettle bush.

How long does he spend in the thorn bush?



Addition and Subtraction Answers

1. 10 sandwiches
2. 9 beans
3. 2 eggs
4. 5 trees
5. 20 minutes
6. 15 pieces of food
7. 13 leaves
8. 9 sheep
9. 20 coins
10. 38 minutes
11. $50 = 35 + 15$
12. 11 minutes

